

N

IT'S ALL ABOUT TEAK

NOV

E

 GLOSTER

GLOSTER EXPLORES NEW DIRECTIONS AND
NEW AESTHETICS WITH A SELECTION OF
INNOVATIVE NEW OUTDOOR
COLLECTIONS FOR 2024.

ETICS



It's all about teak. The benchmark hardwood for fine outdoor furniture for more than 700 years.




With a beautiful, soft and natural finish, every piece of Gloster teak originates from carefully managed plantations and is thoroughly inspected to ensure that quality endures.

Teak is a close grained hardwood with a high natural oil content. This makes it hard wearing, highly resistant to rotting and almost impervious to the effects of sun, rain, frost or snow. These characteristics combine to make it the ideal timber for all outdoor applications.

Only premium grade plantation grown teak is used for the manufacture of Gloster furniture. The features of premium grade teak are a straight grain structure, the absence of knots, splits or cracks and an even overall colour.

Many things make Gloster's teak furniture exceptional. For example, the joints used are specifically chosen to provide the strongest means of joining the component parts together. Thanks to the use of kiln dried timber and our modern wood-working machinery, these joints are made to extremely tight tolerances, which means that they are always a perfect fit and there are no visible gaps between two pieces of joined wood.



It's all about the new collections.
A combination of stylish designs
teamed with expertly crafted
engineering.

Great manufacturing is wasted without great design and Gloster works with several world-renown designers to create our timeless outdoor furniture. Hailing from Aarhus, Denmark, Henrik Pedersen conceived the new Deck lounge collection for 2024, while Navigator was created by Glyn Peter Machin

- an English designer of international standing characterized by a dedication to intelligent functional design and exceptional standards in craftsmanship.

B O R A

BORA - a combination of the tactile and the ethereal, Bora alludes to the imposing winds that buffet the Adriatic coast.





DECK LOUNGE

Inspired by teak decking on the fastest and finest sailing vessels of yesteryear, the simple, yet visually striking design invokes an uncompromising air of quality and craftsmanship.



DECK exemplifies the Gloster design aesthetic, elegant and uniform.

Inspired by the styling cues of the fastest and finest sailing vessels of yesteryear, Deck's simple, yet visually striking design invokes an uncompromising air of quality and craftsmanship.

Broad, substantial, trustworthy and true, a ship's deck is literally the foundation of any voyage of discovery. Perfectly engineered to bear the weight of endless possibility and endure whatever tribulations may be encountered along the way, generous slats of resilient teak have been used for centuries to craft this impromptu footing for weary travellers, bold adventurers and pleasure seekers alike. With an equally unmissable presence, large, low and flat bases provide opportunity for endless seating combinations of unrestricted size.



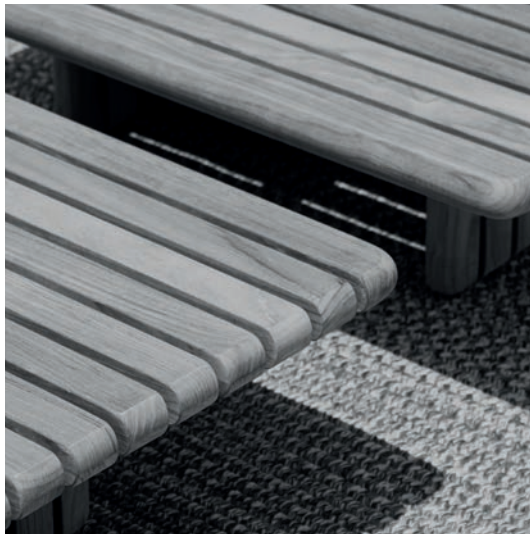
DECK

DESIGN
HENRIK PEDERSEN
DENMARK

Broad, substantial, trusty and true, a ship's deck is literally the foundation of any voyage of discovery.

DECK DETAIL

Broad, long teak slats are refined with impeccable precision by talented craftsmen and women. Every section is perfectly straight, perfectly spaced and perfectly finished in a series of complimentary curves.



DECK LOUNGE

Following the same design cues, teak coffee tables and sofa tables complete the Deck modular lounge range and provide additional opportunity for imaginative configuration with size and height allowing for stand-alone statement or seamless integration.



Located on an unimposing street of a small town in suburban Valencia, Empty House provides a striking pairing of 20th century history and contemporary architecture.

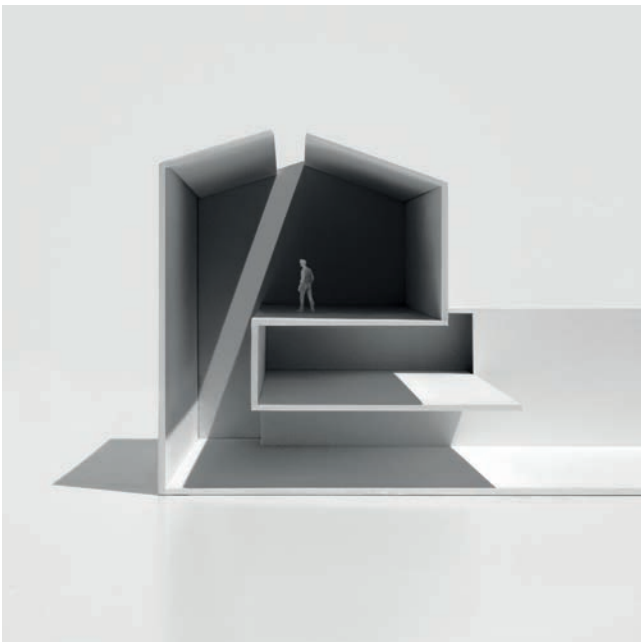
The traditional, town-house façade has been retained, but the interior space has been completely removed and then expertly transformed by Fran Silvestre Architects. Entering through the front door, we find ourselves transported to the present day with a triple-height living area and an almost impossibly smooth and expansive terrace leading to a large swimming pool and lush, gardens.



EMPTY HOUSE

VALENCIA

BY
FRAN SILVESTRE
ARCHITECTS



EMPTY HOUSE

The main area within the new structure features the dividing wall, while the guest rooms cleverly resolve the change of direction of the site, with two pieces separated by only a few millimetres. The remaining space on this floor is left empty, hence the name...

DECK

Inspired by the styling cues of the fastest and finest sailing vessels of yesteryear.





It's all about comfort.
Sit back, relax and
embrace the outdoors.

Charged with the freedom of movement and possibility, Deck's newly introduced modular lounge furniture perfectly parallels the design language of previously launched Deck dining tables. The large, low bases of Deck provide the opportunity for endless seating combinations, while the sturdy

back cushions can be freely moved to any position required. Combined with a variety of matching occasional tables, Deck is truly a collection for built to stand the test of time.



BORA alludes to the imposing winds that buffet the Adriatic coast.

The name evokes a sense of the remote and the exotic, painting a path to the horizon where oceans and skies meet and continents crumble into archipelagos. The Bora collection embraces these flights of fancy, pairing them with functional requirements to flow flawlessly into a form to be reckoned with.

The Bora collection consists of a Dining Chair, Lounge Chair, Sofa, Ottoman and new Lounger, all incorporating luxurious seat and back cushions designed specifically for outdoor use.

REFUGIO EN LA VIÑA

Spanish architect Ramón Esteve designed a very unusual cottage in Fontanars dels Alforins, an area planted with vast vineyards close to Valencia: a contemporary construction inspired by the traditional country home, designed to become a part of the landscape and blend in with the vineyards.





BORA LOUNGER

Bora is available in two wicker combinations – either the bold and dark Umber or a lighter, warmer Sorrel colour.



A combination of the tactile and the ethereal, Bora alludes to the imposing winds that buffet the Adriatic coast.

The rounded expression of circles in the woven backs, create a soft and inviting seating comfort. Inspiring trust and guaranteeing stability, a wide, strong stance is artfully formed from plantation teak in a peerless combination of fine craftsmanship and classic, mid-century, Scandinavian style.



BORA LOUNGER

Seating for all occasions is provided by a comprehensive range of lounge furniture, including a new lounge for 2024 season.

BORA

DESIGN
HENRIK PEDERSEN
DENMARK

Natural organic shapes are an obvious
match with the outdoor space.



WINEYARD

Situated next to a forest of pines and a
vineyard in Fontanars dels Alforins
in the province of Valencia, the monolithic,
central section of the house is made from
formed concrete, and softened with the
addition of slatted timber pods aligned
at right angles.





A photograph of a modern building with a dark wood exterior and a large glass door. The building is situated on a wooden deck. The scene is set at dusk, with a cloudy sky and a warm, ambient glow from the interior lights and a small lantern on the deck. The text "It's all about ambience. A glowing doorway amongst the creeping darkness." is overlaid on the right side of the image.

It's all about ambience.
A glowing doorway amongst
the creeping darkness.

It's no surprise we love the soft dawn, that we wonder at the ruby and amber of a sunset - lost momentarily as the world revolves. But even nomadic people crave structure. We should never dream to improve upon nature, but we can aspire to compliment her.

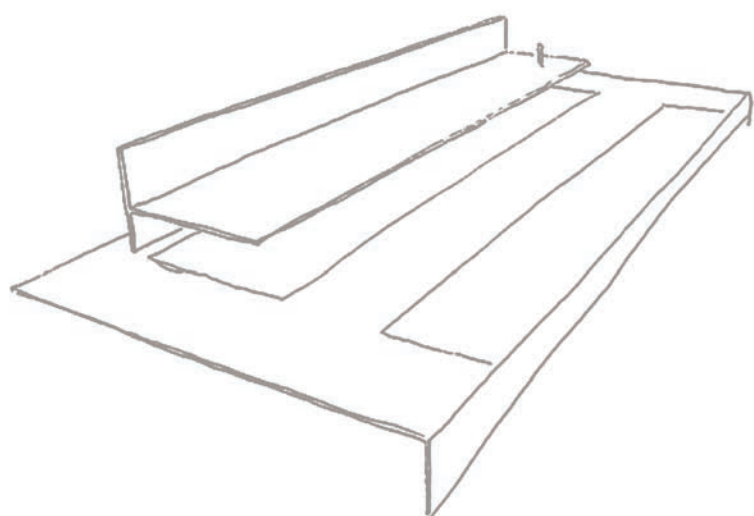
NAVIGATOR

DESIGN
GLYN PETER MACHIN
UNITED KINGDOM

Flowing forms and a unique,
inline folding X-frame.



NAVIGATOR shaped by
memories of a classic
of luxurious travel.



Navigator - elevating heritage style to pioneering plush.
Shaped by memories of a classic era of luxurious travel when adventurers
and explorers sought portable comfort as they travelled, Navigator is a
contemporary interpretation of vintage campaign furniture.

To pinpoint a desired destination and take an unwavering path towards
the identified goal, is the timeless task of the navigator. Pursuing one's
adventures with such single-minded clarity invariably leads to inspired and
fulfilling adventure. And a similar motivation has undeniably shaped Glyn
Peter Machin's equally singular development of the Navigator collection
for Gloster.





NAVIGATOR DINING

The inline folding X-frames are achieved with ingenious, hidden engineering and paired perfectly with both fixed and articulated, brushed stainless steel junctions - cleverly elevating heritage style to pioneering plush.



NAVIGATOR DINING

Focussed firmly on the 'less is more' principle of product design, the versatility and practicality of folding furniture is transported to a new era through creative styling and sophisticated detailing.



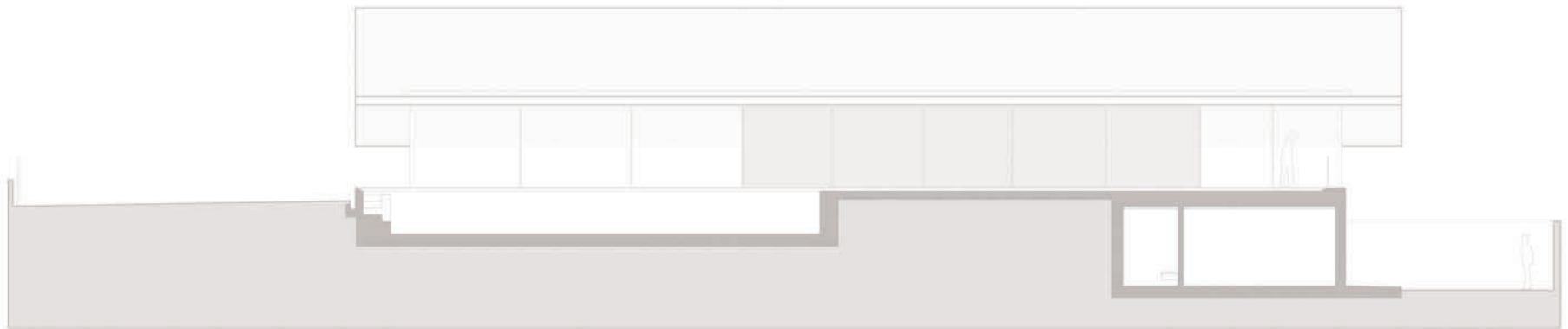


NAVIGATOR DETAIL

Both the folding chairs and stowable table that combine to form the chic Navigator trio artfully express traditional Danish Modern influences, with an added flare of opulence.

HOFFMAN HOUSE

A consolidated landscape surrounded by gardens, a large and elongated plot with a distant view of the sea and a pleasant breeze.

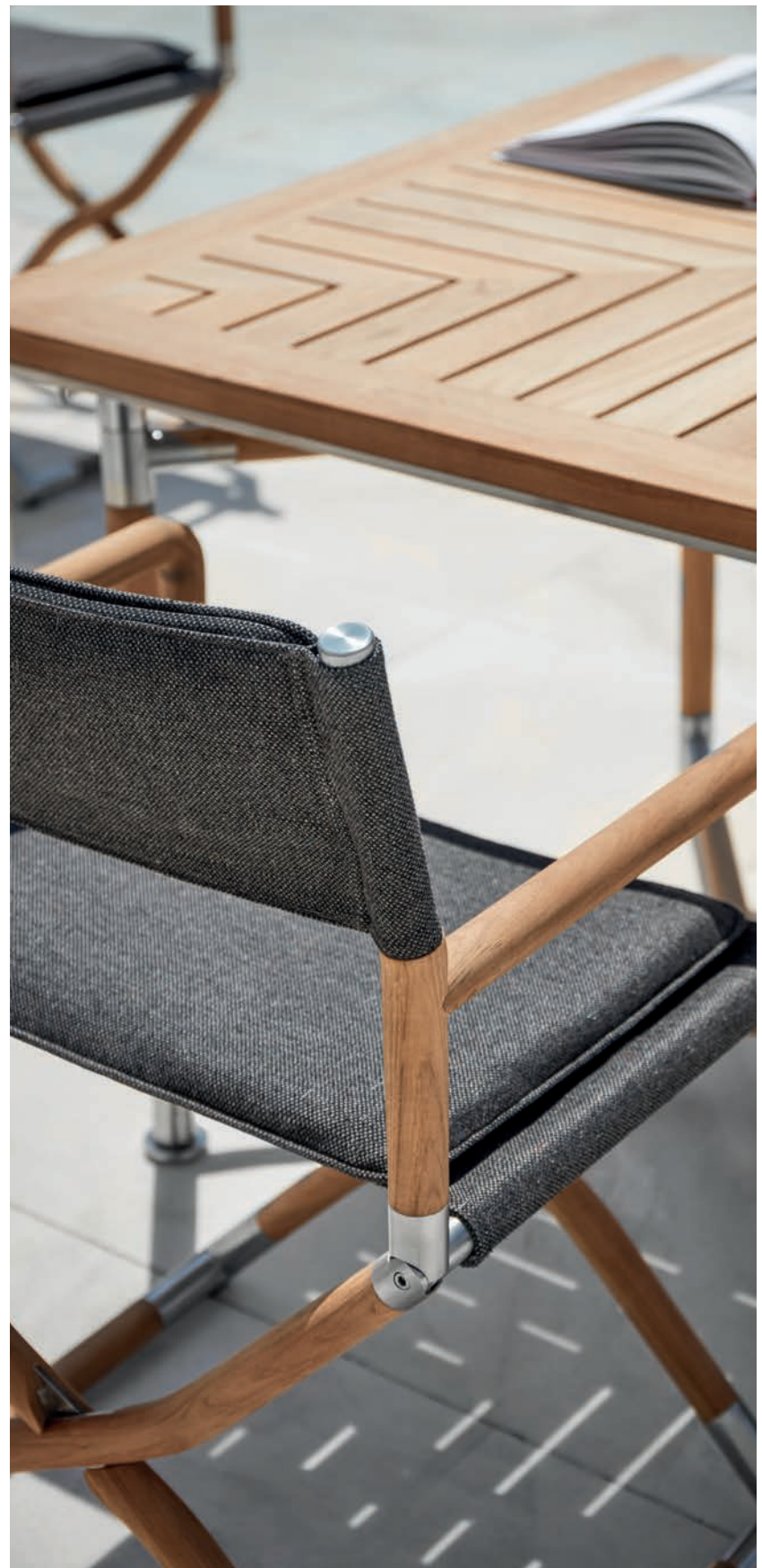


NAVIGATOR DINING

The inline folding X-frames are achieved with ingenious, hidden engineering and paired perfectly with both fixed and articulated, brushed stainless steel junctions.

Pursuing one's adventures with such single-minded clarity invariably leads to inspired and fulfilling adventure. And a similar motivation has undeniably shaped Glyn Peter Machin's equally singular development of the Navigator collection for Gloster.

Shaped by memories of a classic era of luxurious travel when adventurers, explorers and ambitious individuals sought portable comfort as they travelled, these contemporary interpretations of vintage campaign furniture are equally at home in any space; from yacht deck to suite terrace or penthouse balcony. Navigator's clearly defined combination of impressive scale and stylish practicality mean it's as easy to live with as it is to love.



Gloster and fine craftsmanship go hand in hand. Our furniture is not the result of random mass production - human hands have created every rounded corner and every joint, and the quality of the furniture is the result of our employees' knowledge and skills. Our customers must be able to feel the link to themselves when they buy our furniture. There must be a common history present, and a narrative of the life that we love to live. The furniture must speak a language that we understand - a language that awakens our curiosity. But we do not wish to stagnate in the past. We look forward and outward, so the past and future merge into a bold present to which we can all relate.

Today, the same passion, conviction and pride that first launched the Gloster brand, continues to fuel our business. We may live in a different world than the one occupied by our founders, but one thing remains the same - we are furniture makers whose sole focus is to design and build the world's finest outdoor furniture.

It's all about teak,
design, architecture
and innovation.

Gloster's roots can be traced all the
way back to West Africa in 1960,
where a band of passionate
entrepreneurs and furniture makers
took the first steps on a long journey.

GLOSTER FURNITURE GMBH
ZEPPELINSTRASSE 22 · 21337 LÜNEBURG · GERMANY
TEL. +49 (0)4131 28753-0

GLOSTER FURNITURE LIMITED
FIRST FLOOR · SUITE 43-44 · AZTEC CENTRE, AZTEC WEST
ALMONDSBURY · BRISTOL · BS32 4TD · UNITED KINGDOM
TEL. +44 (0)1454 631 950

WWW.GLOSTER.COM
CONTACT@GLOSTER.COM