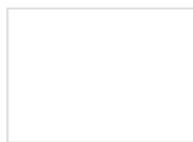


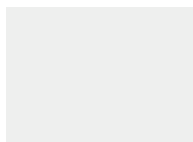
# FINISHES

# Technopolymer

---



**10**  
white



**11**  
linen



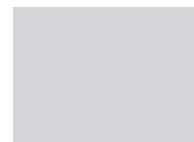
**15**  
dove grey



**81**  
anthracite



**86**  
graphite



**82**  
light grey



**30**  
orange



**40**  
red



**42**  
geranium red



**20**  
yellow



**22**  
mustard yellow



**51**  
light green



**56**  
olive green



**62**  
light blue



**63**  
air-force blue



**60**  
blue



**73**  
terracotta



**72**  
cocoa



**70**  
bronze



**80**  
black



**222**  
white - dove grey



**211**  
white - orange



**212**  
white - red



**221**  
white - light green



**213**  
white - cornflower blue



**214**  
white - anthracite

# Polycarbonate

---



**100**  
transparent



**315**  
glossy dove grey

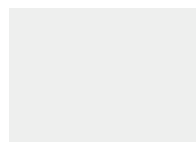


**310**  
glossy white



**183**  
transparent smoked

# Post consumer industrial technopolymer



**11**  
linen



**15**  
dove grey



**17**  
caramel



**81**  
anthracite



**22**  
mustard yellow



**56**  
olive green



**58**  
sage green



**63**  
air-force blue

## Wood



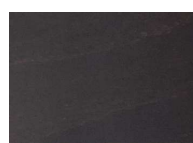
**FN - 500**  
natural beech



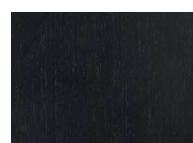
**FS - 501**  
bleached beech



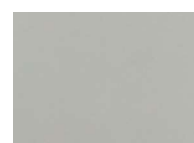
**FW - 502**  
wenge stained beech



**FK - 503**  
smoke beech



**FB**  
black stained beech



**FG - 504**  
matt grey lacquered beech



**FA**  
matt aquamarine  
lacquered beech



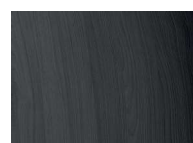
**HS**  
bleached ash



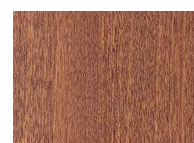
**HW**  
white stained ash



**HN**  
blond stained ash



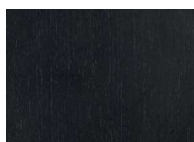
**HB**  
black stained ash  
with visible grains



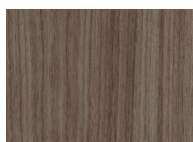
**IROKO**



**RN**  
natural oak



**NR**  
black stained oak



**NC**  
Canaletto walnut



**MS**  
Sapelli mahogany

# Steel



**OS**  
satin brass  
finish steel



**OM**  
matt gold finish  
steel



**BV**  
vintage bronze  
finish steel



**NL**  
glossy black  
nickel finish  
steel



**NO**  
matt black nickel  
finish steel



**NB**  
matt nickel finish  
steel



**KE**  
corten effect  
steel



**CR**  
chromed steel

## Stainless steel

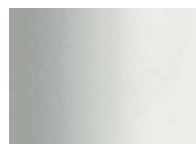


**IS**  
satin stainless  
steel



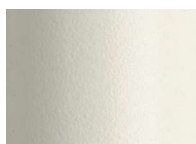
**IL**  
polished stainless  
steel

## Coated steel



**VB**  
matt white coated  
steel smooth  
finish

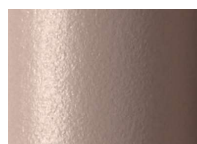
## Coated steel, embossed finish



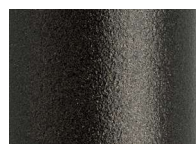
**VL**  
matt linen



**VT**  
matt dove grey



**VH**  
matt caramel



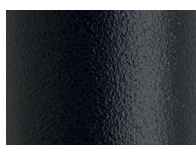
**VR**  
matt bronze



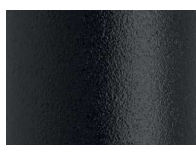
**VK**  
matt mocha



**VF**  
matt graphite



**VA**  
matt anthracite  
grey



**VN**  
matt black



**VY**  
matt mustard  
yellow



**VE**  
matt terracotta



**VD**  
matt olive green



**VS**  
matt sage green



**VO**  
matt air-force  
blue

# Aluminium



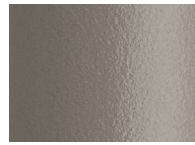
**AA**  
anodised



**AL**  
polished



**AV 10**  
matt white coated,  
embossed finish



**AV 15**  
matt dove grey coated,  
embossed finish



**AV 70**  
matt bronze coated,  
embossed finish



**AV 81**  
matt anthracite  
grey coated,  
embossed finish



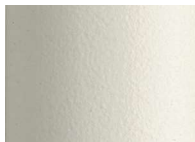
**AV 84**  
silver coated,  
polished finish

# Zinc and matt coated steel, embossed finish

Indoor/Outdoor



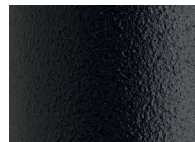
**ZB**  
white



**ZL**  
linen



**ZT**  
dove grey



**ZA**  
anthracite



**ZY**  
mustard yellow



**ZE**  
terracotta



**ZO**  
air-force blue



**ZP**  
antique pink



**ZV**  
olive green



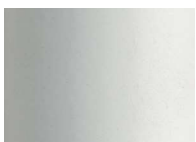
**ZN**  
black

# Zinc and matt coated steel, embossed finish

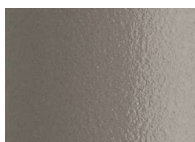
Indoor/Outdoor



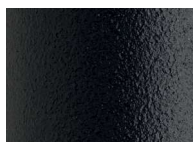
For Summer and Leo finishes



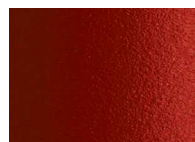
**VB**  
white



**VT**  
dove grey



**VA**  
anthracite



**VM**  
brick red



**VV**  
willow green



**VZ**  
light blue

## Marble

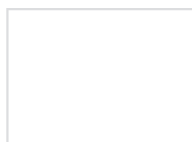


**451**  
Calacatta



**452**  
Sahara Noir

## Compact laminate



**10**  
white



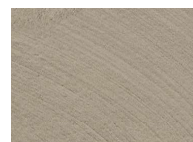
**82**  
light grey



**81**  
anthracite



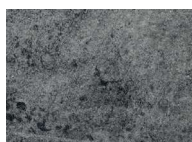
**15**  
dove grey



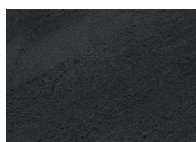
**92**  
dove-grey spatula effect



**93**  
piacentina stone effect



**87**  
concrete effect



**94**  
slate effect



**90**  
stone effect



**91**  
grit effect



**570**  
dove grey oak



**571**  
beaver oak



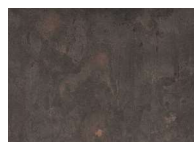
**572**  
Carrara marble effect



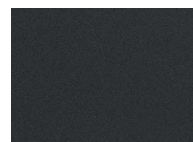
**574**  
black marble effect



**575**  
black Sahara marble effect



**573**  
corten effect



**95 FENIX**  
black FENIX opaque surface, anti-fingerprint and soft touch

## Galvanized and powder coated steel



**ZB**  
white



**ZT**  
dove grey



**ZA**  
anthracite



**ZE**  
terracotta



**ZO**  
air-force blue



**ZV**  
olive green



**ZN**  
black

## Black cork for Dress\_Code



**SN**  
black

Printed colours may be different than real ones because of printing or photographic technical reasons.

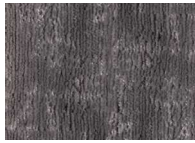


## V5 Chenille

Water repellent



V5 D7



V5 D8



V5 A7



V5 A6



V5 A8



V5 A9



V5 B0

## V4 Velvet

Water repellent



V4 45



V4 40



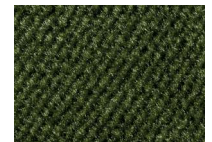
V4 44



V4 46



V4 39



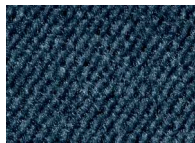
V4 38



V4 47



V4 50



V4 48



V4 49

## V3 Velvet

Fire retardant



**I** 11M - UNI 9175

**F** NF - P 92 503 - M1

**I** Classe 1 - UNI 9177

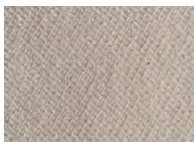
**D** DIN 4102 - B1

**EN** EN 1021:14 Part.1/2

**USA** California TB 117:2013

**GB** BS 5852:06 crib 5

**EN** IMO MED - Ftp 307 Part.8



V3 60



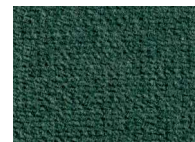
V3 59



V3 62



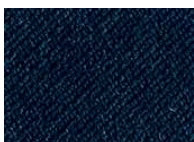
V3 58



V3 57



V3 64



V3 63



V3 66

Please refer to each model on the price list for matching the fabrics.

Fire retardant



- I** Classe 1.IM (UNI 9175)
- EN** EN 1021/1
- EN** EN 1021/2



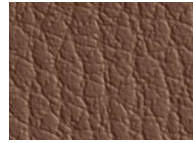
EP 74



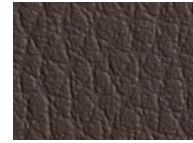
EP E0



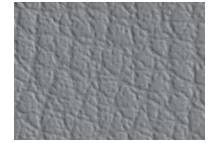
EP 70



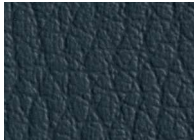
EP 68



EP 73



EP 69



EP 71



EP 75



EP 72



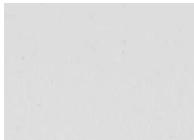
EP E1

Fire retardant



Available on request

- I** Classe 1.IM



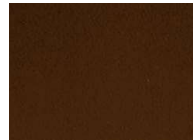
CN 83



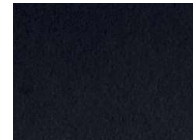
CN A2



CN A1



CN 82



CN 84

Fire retardant



Available on request

- I** Classe 1 IM con schiuma standard ignifuga con densità 25 Kg/cu.m.
- EN** EN 1021 Part. 1-2 using a standard foam 20/22 Kg/cu.m.



WF 98



WF 95



WF 97



WF 96



## K Fabric camira

Fire retardant



- I** UNI 9175 Classe 1 IM
- EN** 1021 - 1 (cigarette)
- EN** 1021 - 2 (match)
- GB** BS 7176 Low Hazard
- GB** BS 5852 Ignition Source 5
- GB** BS 7176 Medium Hazard
- F** NF D 60 - 013
- A** ÖNORM B 3825 & A 3800-1 (58kg/m<sup>3</sup> CMHR Foam)
- GB** BS 5867 - 2:Type B Curtains & Drapes



K1 90



K1 99



K1 00



K1 F1

## L Linen

Certified and CAM compliant



L1 D4



L1 D5



L1 D6

## M Fabric

Fire retardant



**USA** Cal. Tech. Bulletin 117, Section E, Part. 1 (CALIFORNIA TEST)



M1 19



M1 18



M1 17



M1 05



M1 16



M1 20

## COM Customer Own Material

Minimum 20 pcs. Fabric to be approved



Please refer to each model on the price list for matching the fabrics.



**Fire retardant**

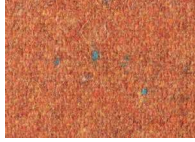
- I** Class 1 IM using a standard FR polyurethane foam 25 kg/cu.m density
- EN** EN 1021 Part 1-2 using a CM Foam 30-33 Kg/cu.m.
- USA** Calif.Bull.117 June 2013



Fabric made up of 50% recycled fibers.



**WJ F8**



**WJ F9**



**WJ G0**



**WJ G1**

**TG Fabric**



**Fire retardant**

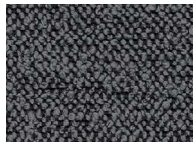
- I** 11M - UNI 9175
- D** DIN 4102 - B1
- I** Classe 1 - UNI 9177
- USA** NFPA 260 Class 1
- EN** EN 1021 part 1/2
- USA** California TB 117:2013
- F** NF D-60 013 (AM18)
- A** ÖNORM B 3825 - normal brennbar



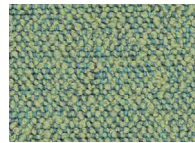
**TG F2**



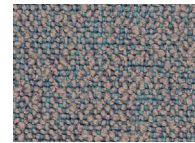
**TG F3**



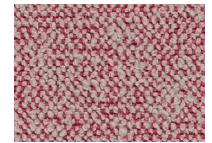
**TG F4**



**TG F5**



**TG F6**



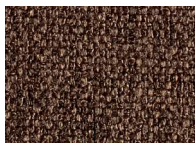
**TG F7**

**T Fabric**

**Water repellent**



**T9 E2**



**T9 E3**



**T9 79**



**T9 E4**



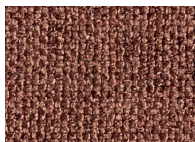
**T9 E5**



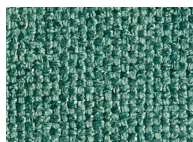
**T9 78**



**T9 85**



**T9 E6**



**T9 E7**

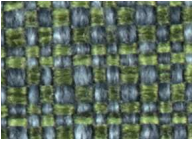


**T9 80**

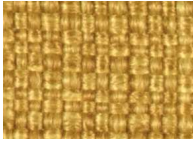


**T9 E8**

## T Fabric



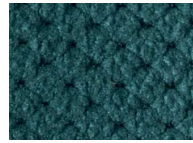
T5 26



T5 27

## T Fabric

Water repellent



M2 09

## T Fabric

Fire retardant



UNI 9175 (CL 1.1M)  
UNI 8456 (CL 1)  
UNI EN 1021 1-2  
BS5852 1-2

- I** Classe 1
- USA** Calif. Bull. 117 June 2013
- GB** BS 5852 Crib N.5 using a CM Foam 35 kg/cu.m.
- EN** EN 1021 Part. 1-2 using a CM Foam 35 Kg/cu.m. Oeko-Tex Standard 100



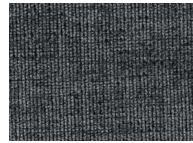
T6 28



T3 25

## T Fabric

Stain resistant



T8 07



T8 08

## T4 Fabric

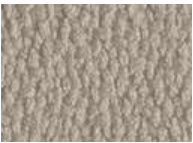
Fire retardant



- I** Classe 1
- D** B1 DIN 4102
- F** M1
- GB** BS 5852 Crib 5 using a CM Foam 35 Kg/cu.m.

- A** Q1 (OENORM 3800 Part 1)
- A** B1 (OENORM B3825)
- EN** EN 1021 Part. 1-2 using a CM Foam 35 Kg/cu.m.
- EN** EN 13773 Burning Behaviour: class 1

- EN** EN 13501 - 1esp. 1,2 : B-s1, d0
- USA** Calif. Bull. 117 June 2013
- EN** EN ISO 6940/6941
- CH** Fire Protection Classification: 5.3



T4 51



T4 A3



T4 53



T4 A4



T4 A5



T4 D9



T4 56



T4 55

## Fabric

### Fire retardant



for Igloo Chair cushions (Art. 1500) and for Miss B fixed cushions

- I** Classe 1
- USA** Calif. Bull. 117 June 2013
- GB** BS 5852 Crib N.5 using a CM Foam 35 Kg/cu.m.
- EN** EN 1021 Part. 1-2 using a CM Foam 35 Kg/cu.m. Oeko - Tex Standard 100



25

## Panama cotton

for Igloo Chair cushions (Art. 1500)



21

## Fabric

### Stain resistant



for Miss B fixed cushions



07

## Fabric

### Fire retardant



for Miss B cushions (Art. 1504) and for Miss B fixed cushions

- I** C1 (UNI 9174 - UNI 8456)
- EN** 1021/1-2 cigarette 2 match
- D** B1 (DIN 4102)
- EN** BS 7176 NH (Medium Hazard)
- F** M1 (NF P 92501-7)
- EN** NF D 60013 (AM18)
- GB** CRIB 5 (BS 5852 part II)



32

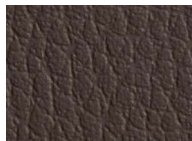
## Simil-leather

### Fire retardant



for Miss B fixed cushions

- I** Classe 1. IM UNI 9175
- EN** EN 1021/1
- EN** EN 1021/2



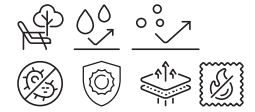
73



# OUTDOOR FABRICS

## Acrylic

Outdoor use / Water repellent / Stain resistant  
Mold resistant / UV resistant / Breathable / Fire retardant

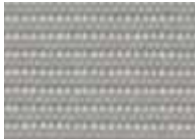


**USA** California Technical Bulletin 117-203 Sezione 1

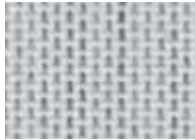
**USA** NFPA 260 Classe 1

**EN** NF EN 1021-1

**GB** BS 5852 Part 1 Source 0



S1 B5



S1 B6



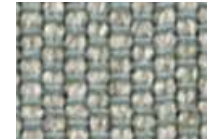
S1 B8



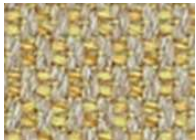
S1 B7



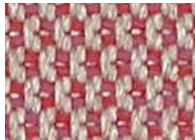
S2 B9



S3 C0



S4 C1



S4 C2



S4 C3



S5 C4



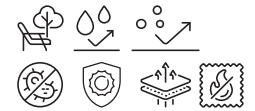
S7 C6



S6 C5

## S8 Acrylic

Outdoor use / Water repellent / Stain resistant  
Mold resistant / UV resistant / Breathable / Fire retardant



Fabric with 50% recycled Sunbrella® acrylic

**USA** California Technical Bulletin 117-203 Sezione 1

**USA** NFPA 260 Classe 1

**EN** NF EN 1021-1

**GB** BS 5852 Part 1 Source 0



S8 G6



S8 G7



S8 G8



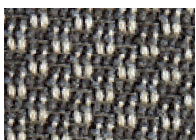
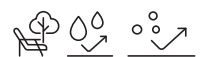
S8 G9



S8 H0

## Acrylic

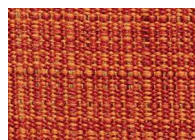
Outdoor use / Water repellent / Stain resistant



A3 C7



A3 C8



A4 C9



A5 D0

Please refer to each model on the price list for matching the fabrics.

## TD Fabric

Outdoor use / Fire retardant



**GB** BS 5852: 1979 source 0 (cigarette test)

**EN** EN 1021-1 (cigarette test)

**USA** CAL TB-117 & NFPA 260



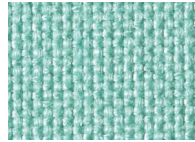
Organic fabric for outdoor use,  
made of recycled polypropylene.



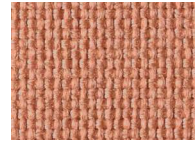
TD G2



TD G3



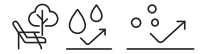
TD G4



TD G5

## A6 Acrylic

Outdoor use / Water repellent / Stain resistant



A6 D1



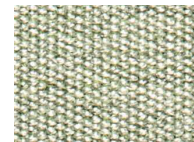
A6 D2



A6 D3



A6 86



A6 89

## WP Acrylic

Outdoor use / Waterproof



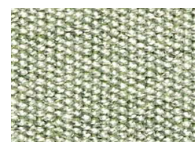
WP 87



WP 88



WP 86



WP 89

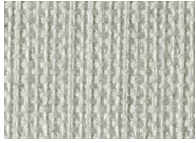


**A7 / A8**

## Acrylic (agora)

Outdoor use / Water repellent / Stain resistant  
Mold resistant / UV resistant / Breathable

Fabric with both recycled and virgin fibers.



A7 H1



A7 H2



A8 H4

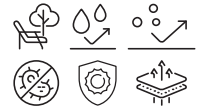


A8 H3

**A9**

## Acrylic (agora)

Outdoor use / Water repellent / Stain resistant  
Mold resistant / UV resistant / Breathable



A9 H6



A9 H5

**A2**

## Acrylic Dralon® Acrisol®

Outdoor use / Water repellent / Stain resistant

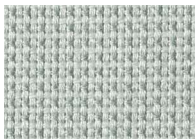


A2 H7

**A0**

## Acrylic Dralon® Acrisol®

Outdoor use / Water repellent / Stain resistant

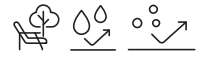


A0 H8

## Acrylic Dralon®

---

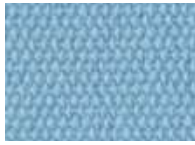
Outdoor use / Water repellent / Stain resistant



for Si-Si, Si-Si Barcode, Si-Si Dots cushions



**B1**



**B2**



**B3**

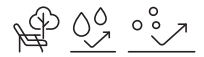


**B4**

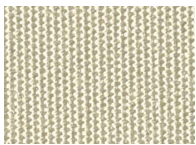
## Acrylic

---

Outdoor use / Water repellent / Stain resistant



for Summer chair and armchair cushions (Art. 1495)

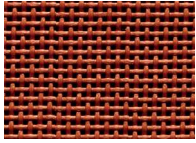


**10**

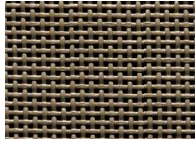
# SYNTHETIC MATERIALS

## Synthetic Fabric Serge Ferrari group

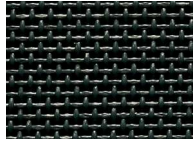
Outdoor use / Breathable / Water repellent



**T73**  
terracotta



**T75**  
mud



**T96**  
slate

## Synthetic Fabric

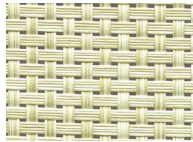
Outdoor use / Breathable / Water repellent



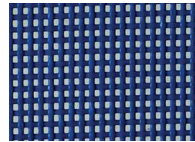
**T10**  
white



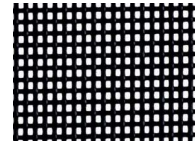
**T15**  
dove grey



**T16**  
honey



**T60**  
blue



**T81**  
anthracite

## Nautical rope

Outdoor use



for Lisa Filò weaving

100% recyclable polyester, dope-dyed, non-toxic, resistant and easy to maintain.



**N84**  
silver



**N81**  
anthracite



**N80**  
black



**N15**  
dove grey



**N30**  
orange



**N57**  
mint

## Extruded pvc reinforced with nylon wires

Outdoor use



for Lisa Club weaving



**P10**  
white



**P86**  
graphite



**P74**  
biscuit



**P73**  
terracotta



The qualities of responsibility and environmental sustainability in industrial production are a green hope for the future of all of us. Contributing to the process of recycling materials and a production method that respects the environment and keeps it clean is also possible in the production and moulding of technopolymers.

All the S•CAB production is made with 100% recyclable materials as their individual components can quickly be sorted for disposal.

Every plastic element has the identification mark according to ISO11469:2001, and provides easy directions for recycling.

All materials used by S•CAB for its production are of first quality.

**PLASTICS** – S•CAB uses techno-polymers with ideal characteristics to manufacture its products, polymeric materials that ensure sturdiness, stability, non-toxicity, resistance to atmospheric agents including mould, dust and smog, and resistance to UV rays. All our techno-polymers are 100% recyclable in full respect for the environment. **For cleaning** use neutral liquid soap diluted in water. Clean with a soft damp cloth to avoid scratches, by all means refrain from using abrasive sponges. Do not use abrasive or chlorine-based products, or solvents in general such as alcohol, benzene, acetone, trichloroethylene, ammonia etc., because these substances tarnish plastic surfaces.

**METALS | STEEL** – Only the highest quality steels are used and a strict control on mechanical resistance values is applied throughout the whole manufacturing process.

**METALS | ALUMINIUM** – Aluminium is a metal that combines lightness and great strength, and its surface is anodised or polyester powder coated to ensure superior resistance to corrosion. **For cleaning.** Use only a soft damp cloth to clean steel, aluminium or coated metal surfaces. Do not use abrasive creams or pastes to clean metals and do not use solvents. We recommend that by all means you refrain from using abrasive sponges or steel wool to clean the surfaces.

**WOOD** – S•CAB furniture items with wooden shell and/or Frame are manufactured in compliance with European standards, with full respect for the environment. **For cleaning** use only a soft suiting damp cloth and warm water and dry immediately with a soft, dry suiting.

Do not use abrasive or aggressive products, chlorine based products and solvents in general. (ammonia, bleach or cleaning products containing acid). Immediately mop up any spilt liquids with a clean dry cloth, wood does not stand the humidity.

Do not expose to direct sunlight. Do not expose to sources of heat.

Wood is a natural material and shall be subject to change color when exposed to sunlight. Wood is a natural raw material; this means that you cannot guarantee the homogeneity and uniformity of synthetic materials. Even elements made from the same plant may show colour differences. Colour variations or imperfections, due to the fibres or veins of wood, are a guarantee of the quality of solid wood and constitute its uniqueness. The colours of our woods are water-based, to respect the environment and health.

**FABRICS** – **For instructions** on how to clean fabrics, please refer to the specific data sheet. For everyday cleaning do not brush, but vacuum clean regularly, avoiding applying pressure to the fabric. For light stains, use a soft damp brush, using if necessary mild detergents or white vinegar diluted in a lot of water. **Do not use abrasive products or detergents or solvents. Do not use high pressure steam washers.**

**SIMIL-LEATHER** – **For cleaning.** For everyday cleaning, use a soft, damped cloth. For more stubborn dirt, use a soft sponge with water and soap. Do not use abrasive products or detergents or solvents for cleaning. Immediately mop up any spilt liquids with a clean dry cloth.

Some dyes for clothing and accessories (e.g., jeans) may migrate to the light colours of this item. This phenomenon increases with humidity and temperature. We take no responsibility for colour transfer caused by external contaminants.

**LEATHER** – S•CAB uses only natural vegetable tanned leather for its upholstered seats. For everyday cleaning, use a soft dry cloth. For more stubborn dirt, use a soft damp cloth. Do not use abrasive products or detergents or solvents for cleaning.

**CORK** – Cork is a 100% eco-friendly, natural, and recycled material; it is soft, elastic, insulating, with fire retardant properties, and can be used both outside (using the same precautions and the same maintenance as wooden products) and inside.

**For cleaning**, use a damp, non-abrasive cloth. Do not use aggressive products because the material absorbs and it could damage it.